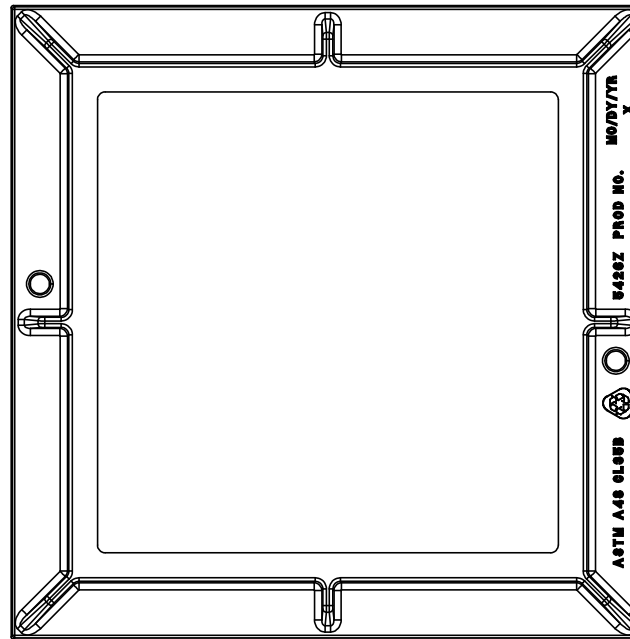
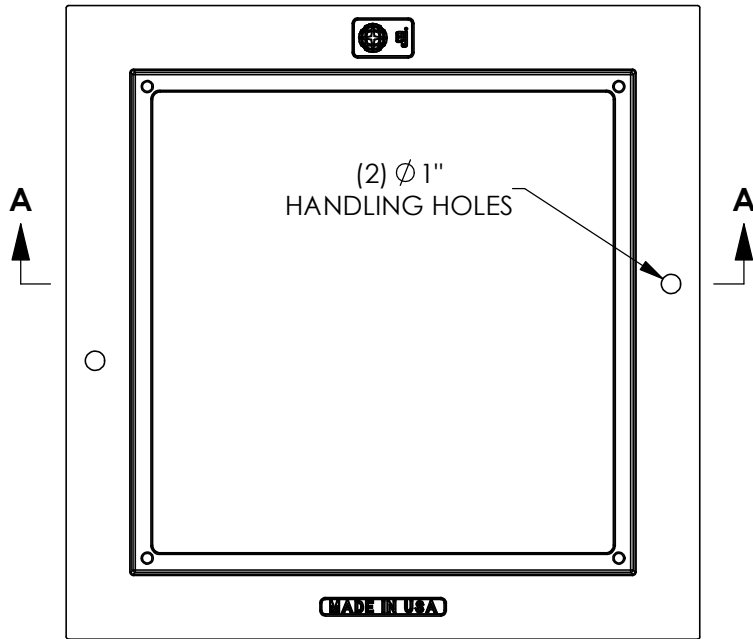


5426Z Frame



Product Number

00542611

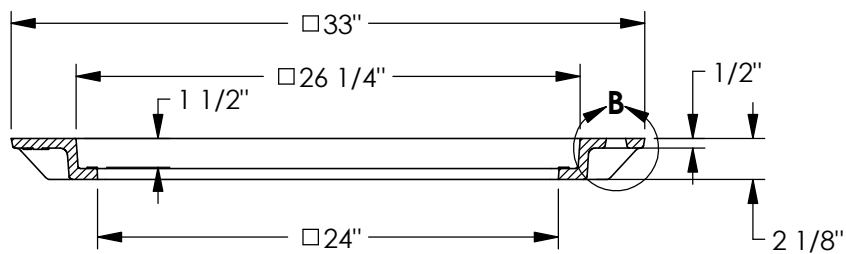
Design Features

- Materials
Gray Iron (CL35B)
- Design Load
Heavy Duty
- Open Area
n/a
- Coating
Undipped
- √ Designates Machined Surface

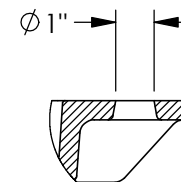
- Estimated Weight: 94 lbs.

Certification

- ASTM A48
- H25
- Country of Origin: USA



SECTION A-A



**DETAIL B
SCALE 1 : 5**

Drawing Revision

1/24/2012 Designer: DEF
3/10/2015 Revised By: MAH

Disclaimer

Weights (lbs/kg), dimensions (inches/mm) and drawings provided for your guidance. We reserve the right to modify specifications without prior notice.

CONFIDENTIAL: This drawing is the property of EJ Group, Inc. and embodies confidential information, registered marks, patents, trade secret information, and/or know how that is the property of EJ Group, Inc. Copyright © 2012 EJ Group, Inc. All rights reserved.

Contact

800 626 4653
ejco.com