



Concrete Parking Lot Bumpers

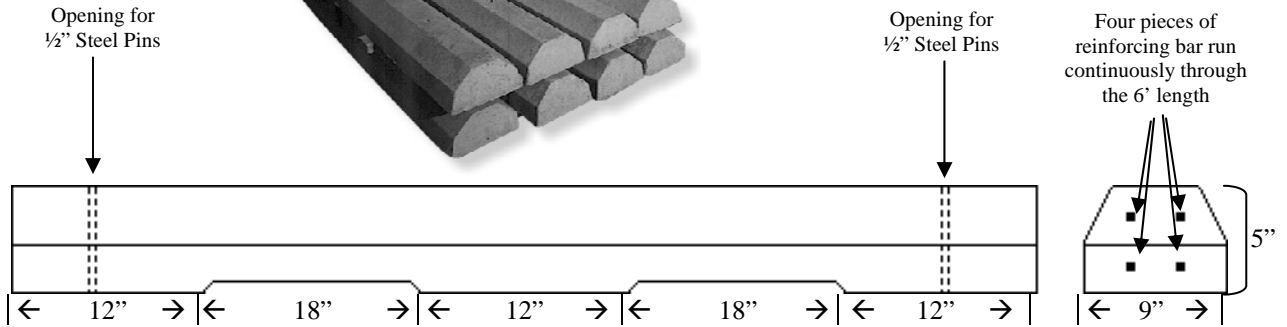
5" x 9" x 6'

6PLB

25 / Pallet

Pins Sold Separately

Appx. 250 lbs



Polymer Covered Parking Lot Bumpers

Install with #4 or #5 Rebar



6" x 5" x 6'

YELLOW 6PLBY

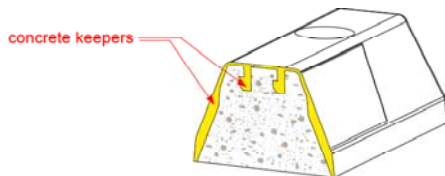
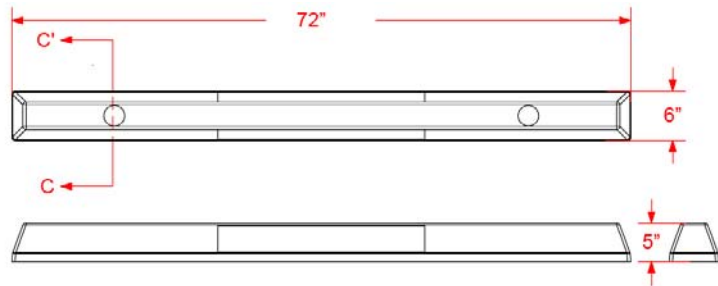
BLUE 6PLBB

Pins Sold Separately

Appx. 125 lbs



SECTION C - C



concrete keepers



COLORS: Safety Yellow OR Handicap Blue
MATERIAL: UV Stabilized, high-impact polymer

PINS

Parking Lot Bumper Pins
1 Pair 1/2" x 24" Steel Rods for anchoring Parking Lot Bumpers



Dimensions may vary slightly.